



Ding
Sculptural coffee table



normann
C O P E N H A G E N

FOR PRODUCT INFORMATION, SWATCHES + ORDERING: HELLO@RYPEN.COM | 800.560.0554 | WWW.RYPEN.COM

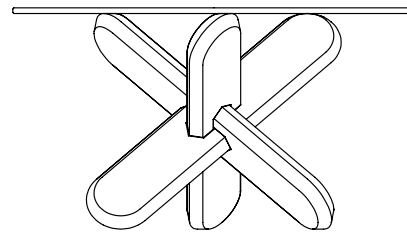
A table that is simply a puzzle

Inspired by ancient three-dimensional wooden brain teaser puzzles, the German design duo Rudolph Schelling Webermann have created a simple coffee table that is assembled without the help of screws and tools. The table consists quite simply of three legs made from oak. When put together they constitute a sculptural knot that works as the base for an exclusive glass tabletop.



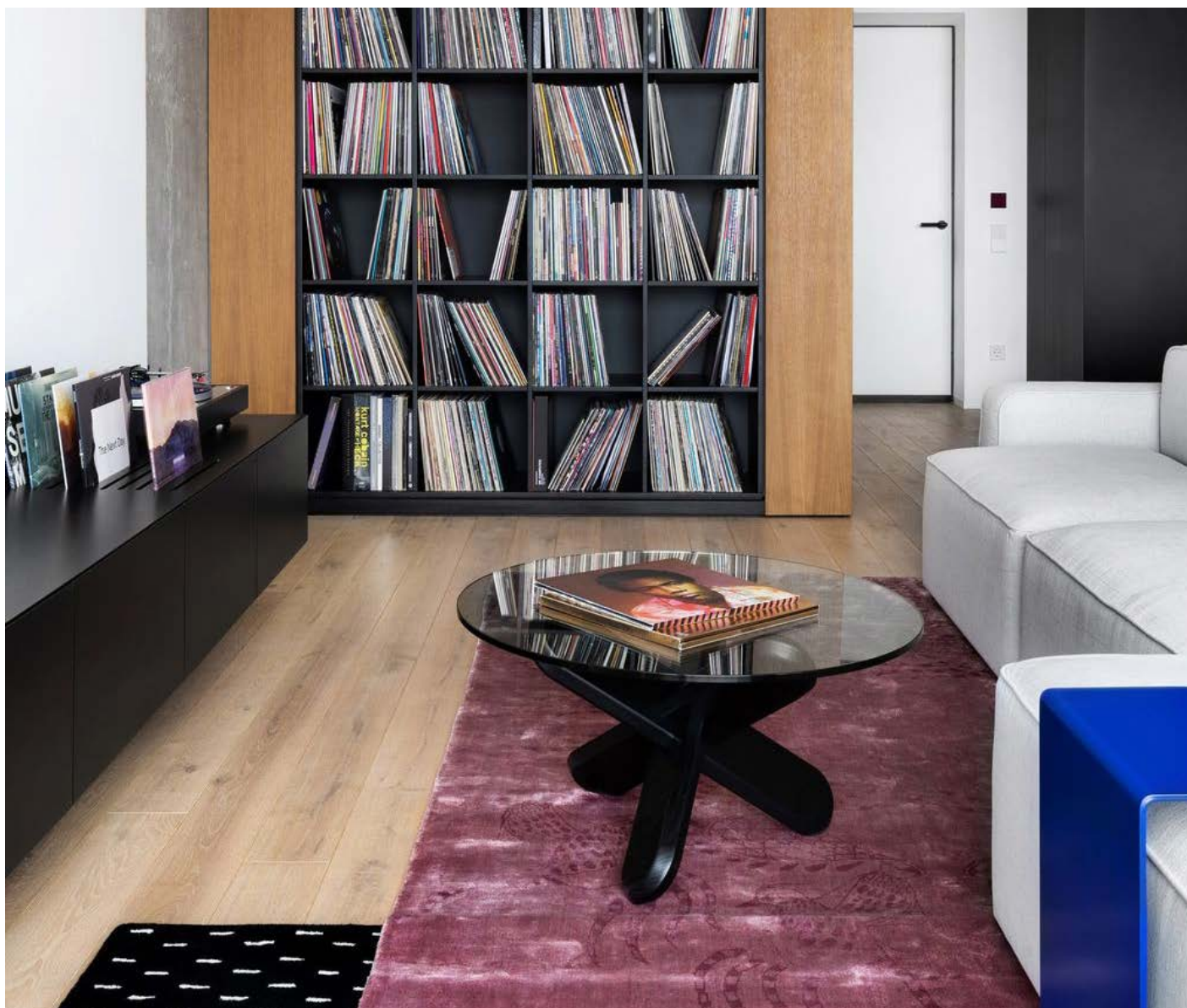
normann
C O P E N H A G E N

Collection Overview



Ding Table
H: 40 x Ø70 cm

normann
C O P E N H A G E N



Product Facts

Description

The Ding table consists quite simply of three legs made from oak that are assembled without screws and tools. When put together they constitute a sculptural knot that works as the base for an exclusive glass tabletop.

Designer / Year Of Design

Rudolph Schelling Webermann / 2013

Material

Tabletop: Glass

Legs: Lacquered oak / Painted and lacquered oak

Construction

The Ding table comes flat-packed. The legs interlock easily by following the included manual. The legs have chamfered edges making the table stand sturdily on the floor and the round 12 mm thick sheet of glass rest solidly on the base.

Maintenance

Clean with a damp cloth.

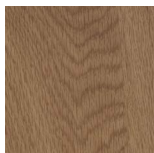
Please be aware that sharp objects can leave marks.

normann
COPENHAGEN



Material Options

Base

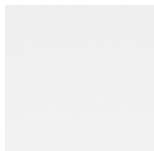


Oak



Black

Glass tabletop



Clear



Smoke

normann

C O P E N H A G E N



normann
C O P E N H A G E N

FOR PRODUCT INFORMATION, SWATCHES + ORDERING: HELLO@RYPEN.COM | 800.560.0554 | WWW.RYPEN.COM



PROFESSIONALS

rypen
STUDIO

Register for Our Exclusive
Project Builder + Ordering Platform

normann
C O P E N H A G E N

FOR PRODUCT INFORMATION, SWATCHES + ORDERING: HELLO@RYPEN.COM | 800.560.0554 | WWW.RYPEN.COM