



# Allez

A new generation  
of café chairs



**normann**  
COPENHAGEN

FOR PRODUCT INFORMATION, SWATCHES + ORDERING: [HELLO@RYPEN.COM](mailto:HELLO@RYPEN.COM) | 800.560.0554 | [WWW.RYPEN.COM](http://WWW.RYPEN.COM)

## For new, meaningful moments

Normann Copenhagen presents its first component-based chair based on a 'knock down' principle and made in pure polypropylene for both indoor and outdoor use. The Allez chair invites you to take a break from a hectic urban lifestyle, where space is often limited and mobile design is key.

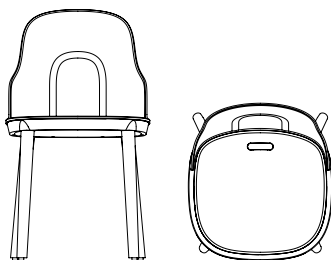
The design of the Allez chair alludes to the French city life and bistro culture that emerged in the late 1800s and has since become a popular way of life all over the world. In the wake of the Wiener chair, the very symbol of café culture, time has made space for a new generation of café-inspired chairs like the Allez.



**normann**  
COPENHAGEN

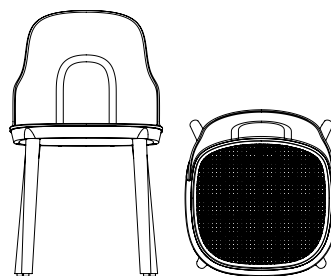


## Collection Overview



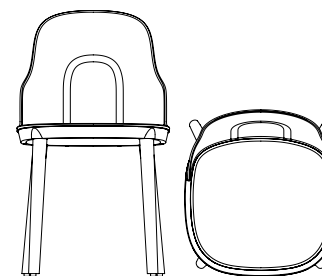
**Allez Chair**  
**Plastic, oak legs**

H: 79 x L: 45 x D: 50 x SH: 45,5 cm



**Allez Chair**  
**Molded wicker seat**

H: 79 x L: 45 x D: 50 x SH: 45,5 cm



**Allez Chair upholstery**  
**Main Line Flax**

H: 79 x L: 45 x D: 50 x SH: 45,5 cm

**normann**  
C O P E N H A G E N



## Product Facts

### Description

The Allez chair gives a contemporary look and feel to the traditional café chair's soft idiom and constructive strength in terms of design, functionality and sustainability. The design is suitable for both indoor and outdoor use.

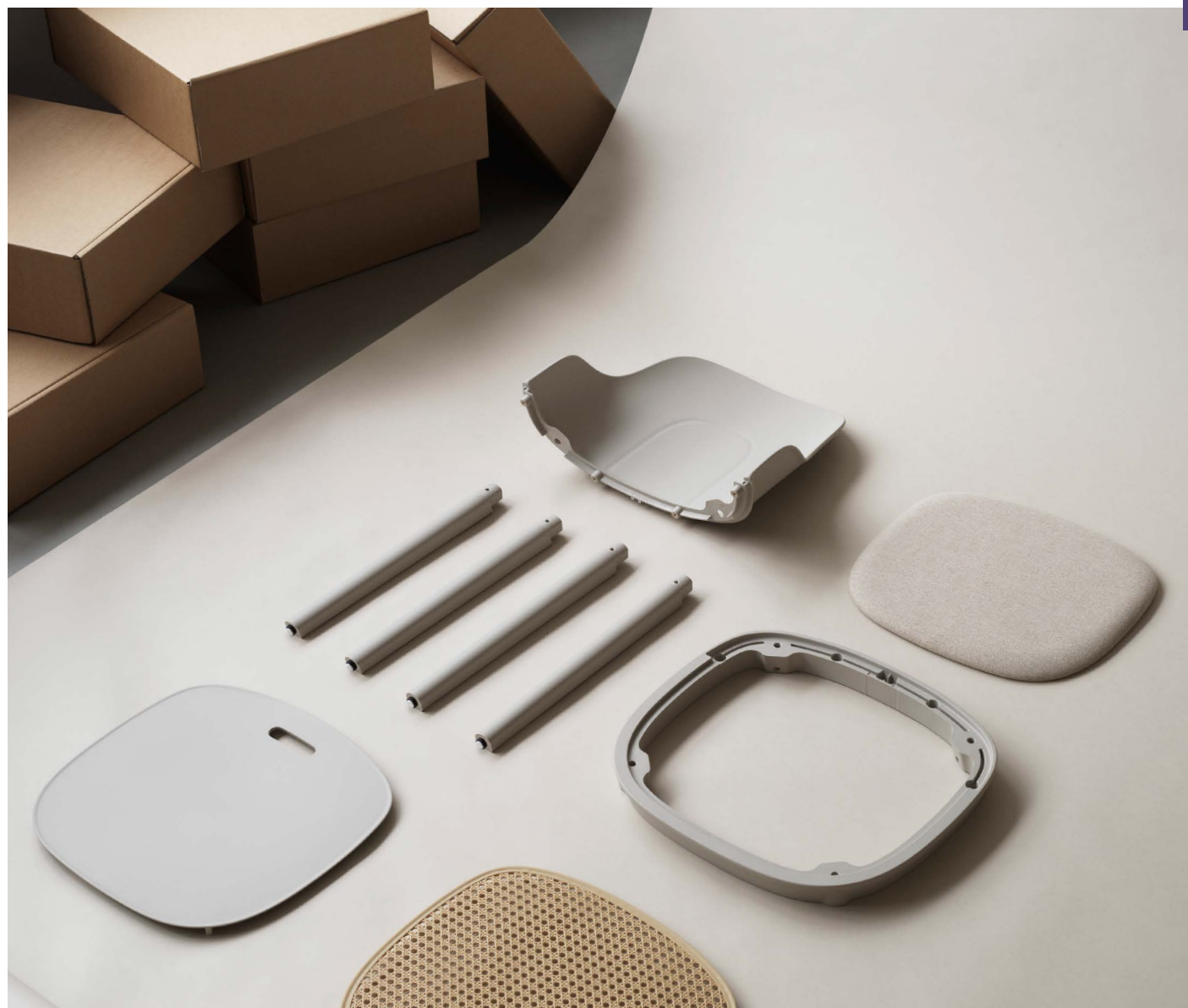
### Designer / Year Of Design

Simon Legald, 2021

### Material

Main body in polypropylene (PP). Seat available in polyamide (PA), molded wicker polypropylene (PP) or indoor or outdoor upholstery. Legs available in polypropylene (PP) or lacquered oak. ►

**normann**  
COPENHAGEN

**► Construction**

The Allez chair is a knock-down component-based chair consisting of seven main components of a frame, a seat, a backrest and four legs. The chair is suitable for indoor or outdoor use and all parts are replaceable. The Allez chair is gas-injection molded using pure polypropylene (PP) and weighs only 3.6 kg. The seat is available in polyamide (PA) with a subtle cut-out, molded wicker in PP or with upholstery for indoor or outdoor. The legs are available in PP or lacquered oak. The Allez chair is delivered flat-packed or can be ordered assembled. A small set of tools and an instruction manual are included.

**Maintenance**

Clean with a damp cloth.

**Test**

European standards Level 2  
(EN 16139:2013 and EN 1022:2005).  
ANSI/BIFMA X5.1 – 2017

**normann**  
C O P E N H A G E N



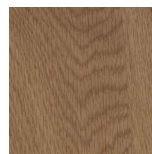
# Material Options

## Shell / Seat / Legs



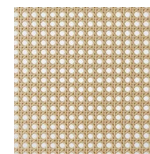
Black White Grey Warm Grey Park Green

## Wood legs



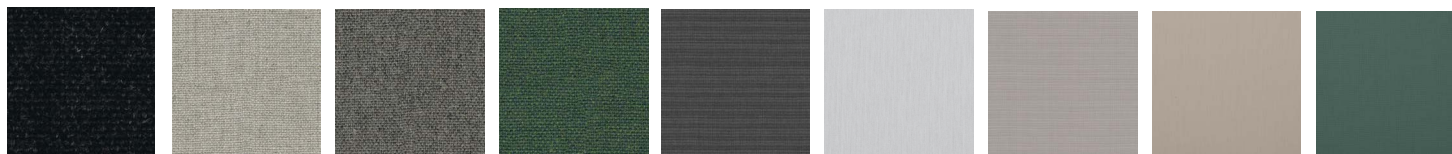
Oak

## Molded wicker seat



Molded wicker

## Upholstery (Follows color of chair)



Black chair: Camira Main Line Flax Black MLF28	Warm Grey chair: Camira Main Line Flax MLF20	Grey chair: Camira Main Line Flax MLF26	Park Green chair: Camira Main Line Flax MLF29	Black chair: Sunbrella Canvas SJA 3705 137	White chair: Sunbrella Canvas SJA 3966 137	Grey chair: Sunbrella Canvas SJA 3706 137	Warm Grey chair: Sunbrella Canvas SJA 3988 137	Park Green chair: Sunbrella Canvas SJA 3987 137
---	---	--	--	---	---	--	---	--



Black chair: Sørensen Leather Ultra 41599	White chair: Sørensen Leather Ultra 41594	Grey chair: Sørensen Leather Ultra 41575	Warm Grey chair: Sørensen Leather Ultra 41584
--	--	---	--

**normann**

C O P E N H A G E N



**normann**  
COPENHAGEN

FOR PRODUCT INFORMATION, SWATCHES + ORDERING: [HELLO@RYPEN.COM](mailto:HELLO@RYPEN.COM) | 800.560.0554 | [WWW.RYPEN.COM](http://WWW.RYPEN.COM)



**normann**  
C O P E N H A G E N

FOR PRODUCT INFORMATION, SWATCHES + ORDERING: [HELLO@RYPEN.COM](mailto:HELLO@RYPEN.COM) | 800.560.0554 | [WWW.RYPEN.COM](http://WWW.RYPEN.COM)





**normann**  
C O P E N H A G E N

FOR PRODUCT INFORMATION, SWATCHES + ORDERING: [HELLO@RYPEN.COM](mailto:HELLO@RYPEN.COM) | 800.560.0554 | [WWW.RYPEN.COM](http://WWW.RYPEN.COM)



**normann**  
C O P E N H A G E N

FOR PRODUCT INFORMATION, SWATCHES + ORDERING: [HELLO@RYPEN.COM](mailto:HELLO@RYPEN.COM) | 800.560.0554 | [WWW.RYPEN.COM](http://WWW.RYPEN.COM)



**normann**  
C O P E N H A G E N

FOR PRODUCT INFORMATION, SWATCHES + ORDERING: [HELLO@RYPEN.COM](mailto:HELLO@RYPEN.COM) | 800.560.0554 | [WWW.RYPEN.COM](http://WWW.RYPEN.COM)



**normann**  
C O P E N H A G E N

FOR PRODUCT INFORMATION, SWATCHES + ORDERING: [HELLO@RYPEN.COM](mailto:HELLO@RYPEN.COM) | 800.560.0554 | [WWW.RYPEN.COM](http://WWW.RYPEN.COM)



PROFESSIONALS

**rypen**  
STUDIO

Register for Our Exclusive  
Project Builder + Ordering Platform

**normann**  
C O P E N H A G E N

FOR PRODUCT INFORMATION, SWATCHES + ORDERING: [HELLO@RYPEN.COM](mailto:HELLO@RYPEN.COM) | 800.560.0554 | [WWW.RYPEN.COM](http://WWW.RYPEN.COM)